

The background image is a faded, high-angle photograph of a school campus. It shows a large, modern school building with a flat roof and large windows. In the foreground, there is a paved courtyard or parking area with some greenery and a few people walking. The sky is blue with some white clouds.

Woodland Public Schools

Facilities and Safety
April 2017 report

FACILITIES REPORT

Summer work

We will continue to focus on building exteriors to protect the infrastructure of our buildings. This summer I am ramping the paint team from 2 to 6 employees. Major items planned for this summer include:

- Paint and reside PO 2/3, 4/5, 6/7 Portable 11/12 will require major renovation, roof, siding paint ramps mold mitigation.
- Add sidewalk to Green Gym from end of Green Hall
- Multiple paving projects including seal coating existing paved areas and new pavement
- Sandblasting areas at WPS and WIS that were tagged and painted over. We will apply a treatment that seals the brick or concrete to prevent tagging from sticking.
- Roofing replacement and repairs at WPS and WMS
- Carpet replacement at WMS and select area in the K-wing at WPS
- Camera system WPS (in progress) WIS and WMS
- Portable install WIS
- Paint building A WMS (wood shop, metal shop and IT building)
- Prepping portable 461 and 463 at WMS for ELL and staff offices
- LED conversion Green hallway, Yellow hallway and Commons
- Numerous other projects around the district (60 in all)

Facilities Report Continued

Card key access system

Systems are up and running at WPS and WMS. We will move forward with WIS next week

WIS still needs to have the FOB systems removed along with the magnetic locks (employee access points only). Key pads will replace the existing internal FOB access points. This work is scheduled for Wednesday 5/17. Installation was pretty uneventful so far and most employees seem to like the easy access to the buildings (if they are badged). We have identified a few areas that need to be added, DO inner door and Special needs access at WPS.

Camera systems

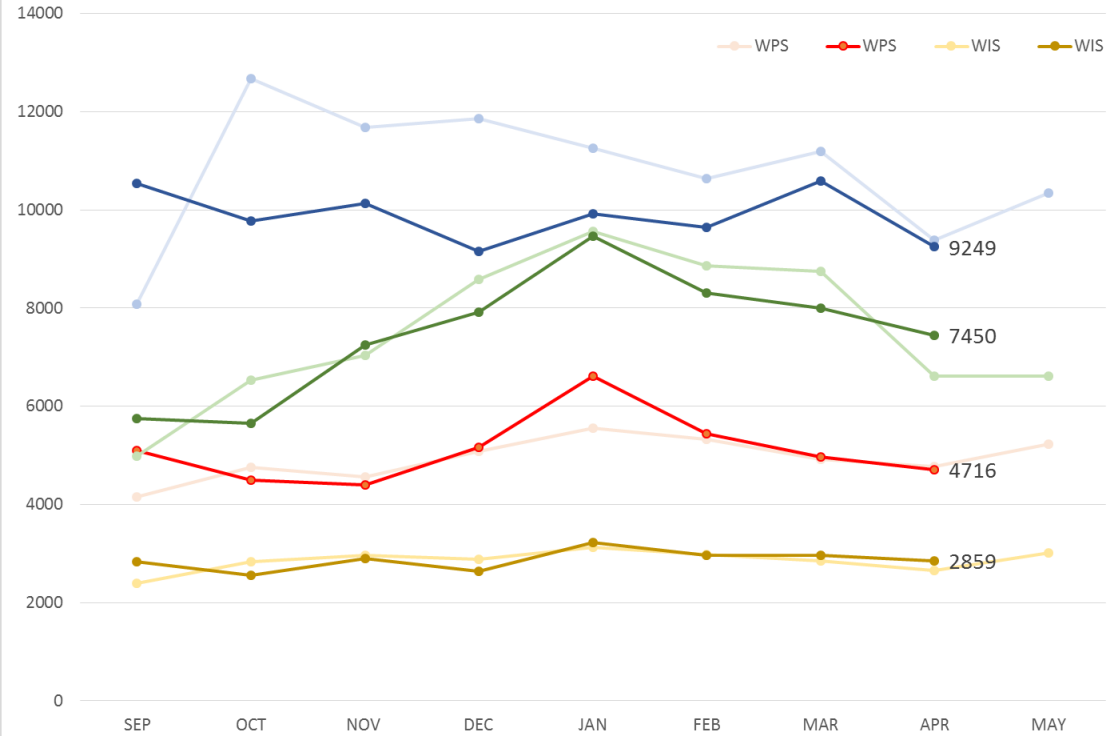
8 cameras are installed at WPS, Getting ready to install WIS cameras next and will tackle the WMS complex during the summer. We are doing this project with in house labor as time permits, which is somewhat slowing down the progress of this work

Portable install

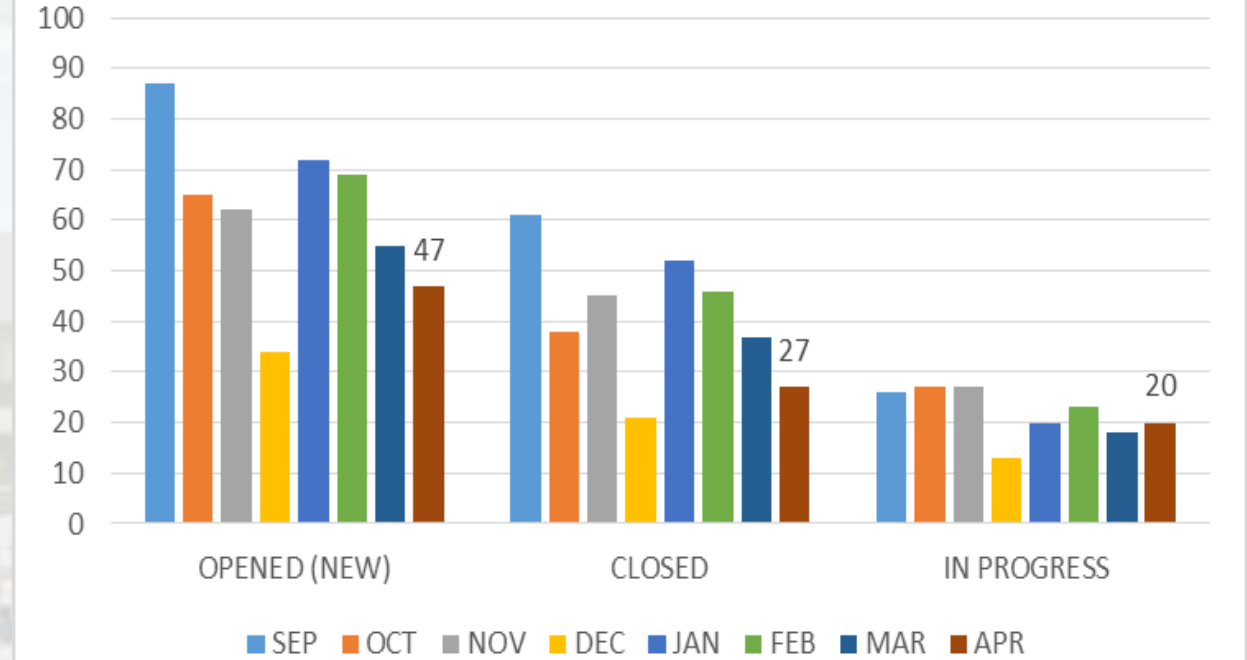
WPS Permits in hand, final grade complete, well outer collar removed and well head cut to grade. Received low voltage/simplex and fire quotes yesterday and plan to issue PO's this week. Once high voltage plans are done they will be sent to department of Labor and Industries for plan review. I expect this to happen next week.

FACILITY CHARTS – POWER COST AND WORK ORDER STATUS

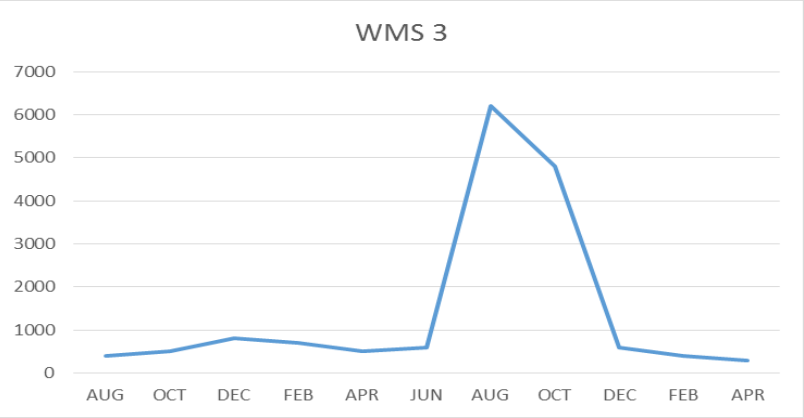
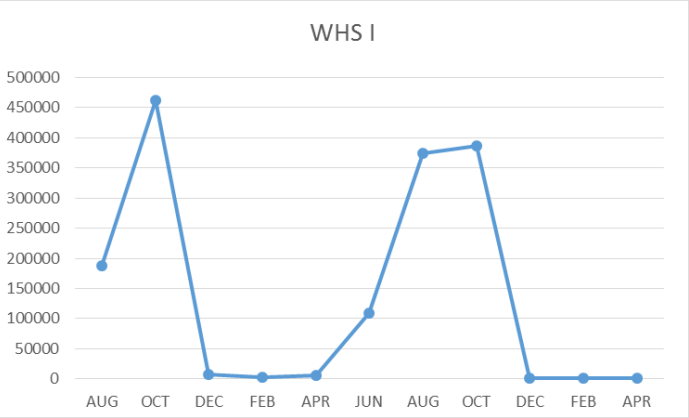
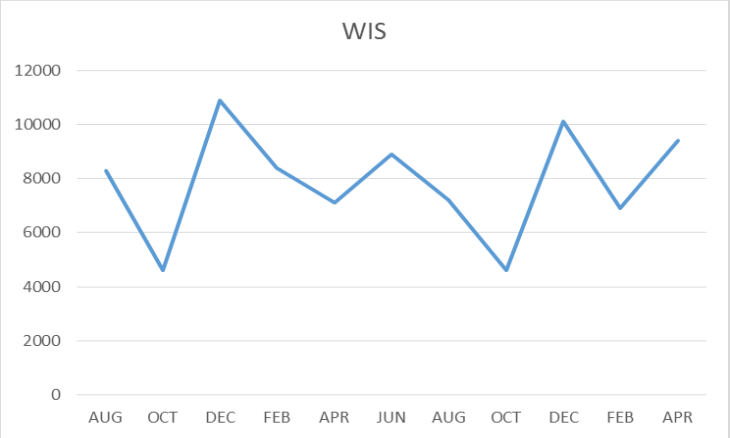
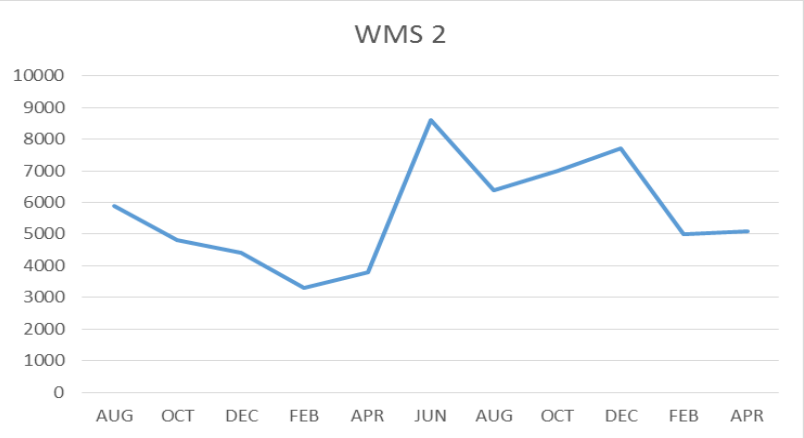
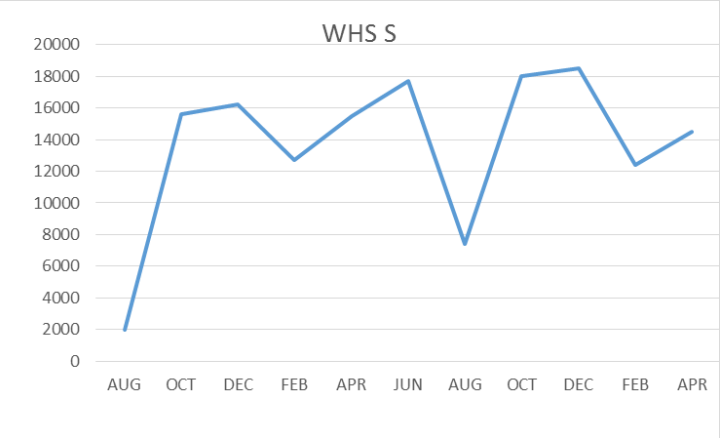
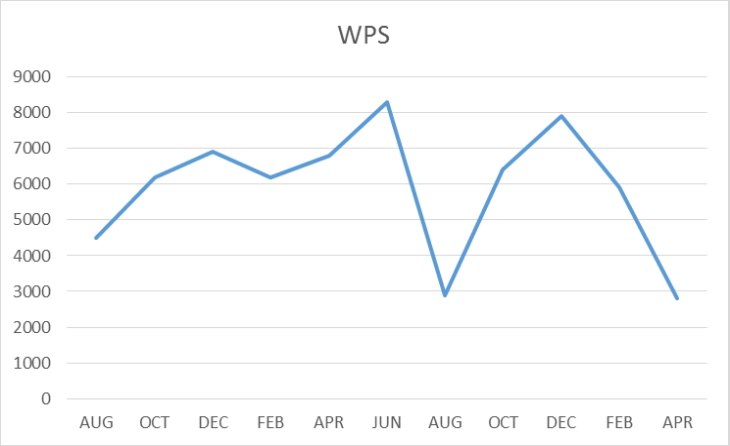
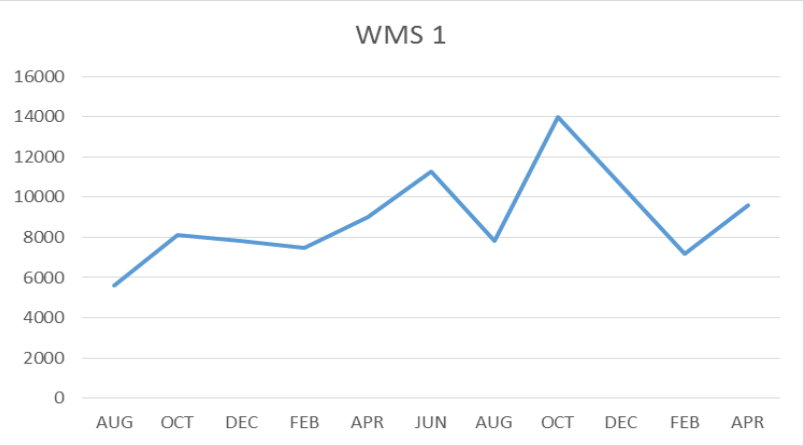
ELECTRICAL COST (USD) 15/16 & 16/17 SCHOOL YEARS



CM WO STATUS



FACILITY CHARTS – WATER USAGE WHS, WIS, WMS, WPS



SAFETY

Accidents for the month

There were a total of 6 injuries/incidents in the month, 4 student, 2 Staff

Staff Accidents/Incidents (2)

- WHS – Employee hit knee on podium
- WPS – Employee was kicked during de-escalation activity

Student Accidents/injuries (4)

- WHS – Student injured collar bone when playing soccer
- WHS – Student dropped weight on foot while moving them
- WPS – Student slipped on play structure bruised
- WPS - Student got foot stuck on spiral bar on play structure

SAFETY CHARTS

